

FWFO.EWS0010 - EXTERIOR WALL SYSTEMS

FWFO - Exterior Wall Systems

See General Information for Exterior Wall Systems

System No. EWS0010

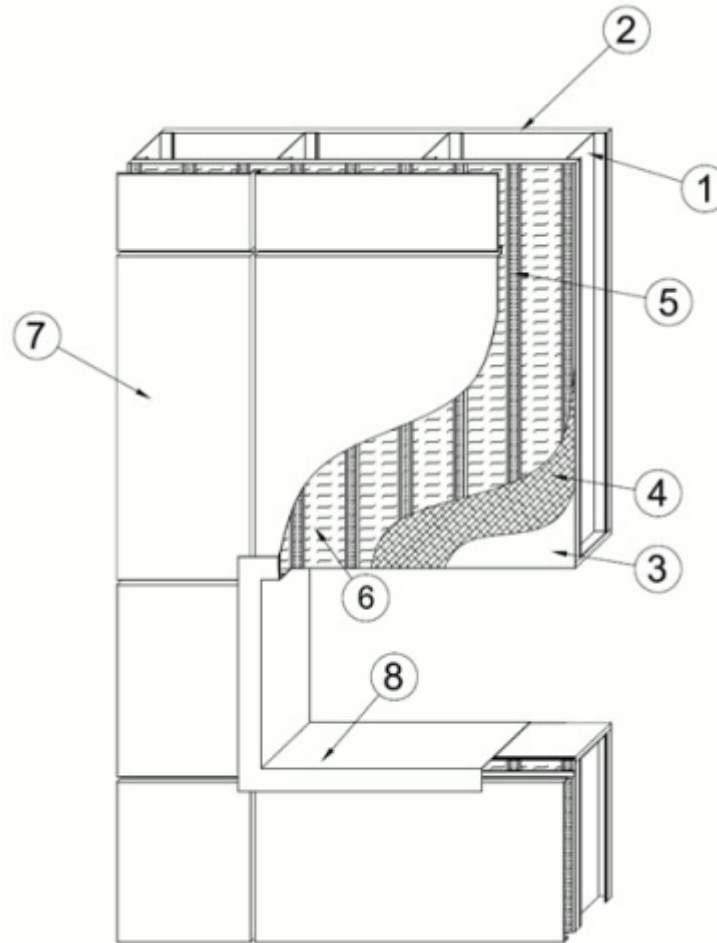
April 16, 2019

ASTM E2357 - 0.029 cfm/ft² (0.015 l/s·m²) @ 75 Pa (1.57 psf) - Category 1 (when using Item 4)

ASTM E2357 - 0.001 cfm/ft² (0.004 l/s·m²) @ 75 Pa (1.57 psf) - Category 1 (when using Item 4A)

ASTM E331 - 2 Hr @ 300 Pa (6.27 psf) (when using Item 4 or 4A)

Exterior Wall System



1. **1. Steel Studs** — Min 3-5/8 in. (92 mm) deep, formed of min 16 ga. galv steel spaced max 16 in. (406 mm) OC. Additional studs to be used to completely frame window openings.

2. **2. Interior Gypsum Board (CKNX)*** — Min 5/8 in. (16 mm) thick, 4 ft (1.2 m) wide, attached to steel studs with 1-5/8 in. (41 mm) long, Type S steel screws spaced max 8 in. (203 mm) OC. Joints oriented vertically and covered with paper tape and joint compound. Screw heads covered with joint compound. Additional sheathing to be used to line framed window openings.

UNITED STATES GYPSUM CO — Type SCX

2A. **2A. Interior Wall System Component** — Sealant (Optional - Not Shown) — Sealant may be applied to the interior gypsum board at areas and gaps of air leakage, such as penetrations and transitions. Not to exceed individual openings no greater than 5/8 in. (16 mm) diameter, and seam / joint openings no greater than 5/8 in. (16 mm) across.

AEROSEAL LLC — Aerobarrier X1

3. Exterior Gypsum Sheathing (CKNX)* — Exterior-grade glass mat sheathing gypsum board, minimum 5/8 in. (16 mm) thick, attached to steel studs with 1-5/8 in. (41 mm) long, Type S steel screws spaced max 8 in. (203 mm) OC. Joints oriented vertically or horizontally.

UNITED STATES GYPSUM CO — Type USGX

3A. Exterior Wall System Component — Sealant* — (Not Shown) — Sealant applied to all exterior sheathing joints and screw heads prior to application of air barrier sealant (Item 3).

TREMCO INC — Dymonic 100

4. Exterior Wall System Component — Combustible Air and Vapor Barrier* — Self-Adhered barrier applied to completely cover the exterior sheathing gypsum board (Item 3) with min 2 in. (51 mm) vertical or horizontal overlap between layers.

TREMCO INC — ExoAir 111

4A. Exterior Wall System Component (optional, not shown) — Combustible Air and Vapor Barrier* — As an alternate to Item 4, self-Adhered barrier applied to completely cover the exterior sheathing gypsum board (Item 3) with min 2 in. (51 mm) vertical or horizontal overlap between layers.

TREMCO INC — ExoAir 110AT

5. Steel Mounting Channels — Min 12 ga. steel mounting system secured to exterior sheathing (Item 3) with min 0.25 in. (6 mm) diam self-tapping steel screws spaced max 16 in. (406 mm) OC. Installed vertically for securement of exterior panels (Item 7).

6. Foam Insulation (BRYX)* — Nom 4 by 8 ft (1.2 by 2.4 m) by 2 in. (51 mm) thick wide foil faced polyisocyanurate insulation position over air and vapor barrier (Item 4) friction fit between and within vertical steel mounting system.

THE DOW CHEMICAL CO — Thermax

7. Exterior Panels — Nom 36 in. (914 mm) wide by 1 in. (25 mm) deep, 0.157 in. (4 mm) thick aluminum composite material panel system secured to steel mounting system (Item 5) in accordance with the mounting system manufacturer's installation instructions.

ALCOA INC — Reynobond FR

7A. Exterior Panels (FWFX)* — (As an alternate to Item 7) — Nom 36 in. (914 mm) wide by 1 in. (25 mm) deep, 0.157 in. (4 mm) thick aluminum composite material panel system secured to steel mounting system (Item 5) in accordance with the mounting system manufacturer's installation instructions.

3A COMPOSITES USA INC — Alucobond Plus

8. **Steel Flashing** — Formed of min 14 ga. steel. Formed to completely line window opening and overlap onto both surfaces of the wall assembly a min 1-1/2 in. (38 mm).

*** Indicates such products shall bear the UL or cUL Certification Mark for jurisdictions employing the UL or cUL Certification (such as Canada), respectively.**

Last Updated on 2019-04-16

The appearance of a company's name or product in this database does not in itself assure that products so identified have been manufactured under UL's Follow-Up Service. Only those products bearing the UL Mark should be considered to be Certified and covered under UL's Follow-Up Service. Always look for the Mark on the product.

UL permits the reproduction of the material contained in the Online Certification Directory subject to the following conditions: 1. The Guide Information, Assemblies, Constructions, Designs, Systems, and/or Certifications (files) must be presented in their entirety and in a non-misleading manner, without any manipulation of the data (or drawings). 2. The statement "Reprinted from the Online Certifications Directory with permission from UL" must appear adjacent to the extracted material. In addition, the reprinted material must include a copyright notice in the following format: "© 2019 UL LLC"